



TM

© New Wave Doors Ltd 2023

THE DOORS THAT DO WHAT BI-FOLDS DON'T

BUYER'S GUIDE

NWD_BG_1.2



Pictured: 5 Panel New Wave Door

CONTENTS

WHY A NEW WAVE DOOR?

Introduction	1
Security	2 - 7
Versatility	8 - 9
Practicality	10 - 11
Usability	12 - 13
Reliability	14 - 15
Good Looks	16 - 17

CUSTOMISING YOUR NEW WAVE DOOR

Introduction	18 - 19
Configuration	20
Colour	21
Handle	22
Cylinder	23
Glass	24
Cill & Ventilation	25

THE STORY BEHIND OUR PASSION

The Product	26 - 28
The Backlash	29
Never Mind The Bi-folds	30 - 31
Evolution	32 - 37

PRODUCT SPECIFICATION

Product Specification	38 - 39
-----------------------	---------



Pictured: 6 Panel & 2 Panel New Wave Doors Going Around A Corner

BUYER'S GUIDE

WHY A NEW WAVE DOOR?

INTRODUCTION

"THE DOORS THAT DO WHAT BI-FOLDS DON'T"

At New Wave we understand that choosing a door system for your dream project can be difficult, but it shouldn't be.

The door system is probably the part of your finished project with which you will interact the most and in the end will have a defining effect, either positive or negative. The New Wave Door, with its patented operating system, surpasses any other door system in terms of design, reliability, usability, versatility, security and aesthetics. This is because we have listened to what customers need from a door system and in these next few pages we have tried to give the facts and an insight into our passion and 'why we do what we do'.

Thank you for taking the time to read this, we hope that you find it helpful in making the right decision for your project.

BUYER'S GUIDE

WHY A NEW WAVE DOOR?

SECURITY

"SECURITY THAT'S NEVER BEEN COMPROMISED"

Security is one of the most important considerations when choosing a door system for your home, and the security performance of the New Wave Door eclipses that of any other door system on the market today.

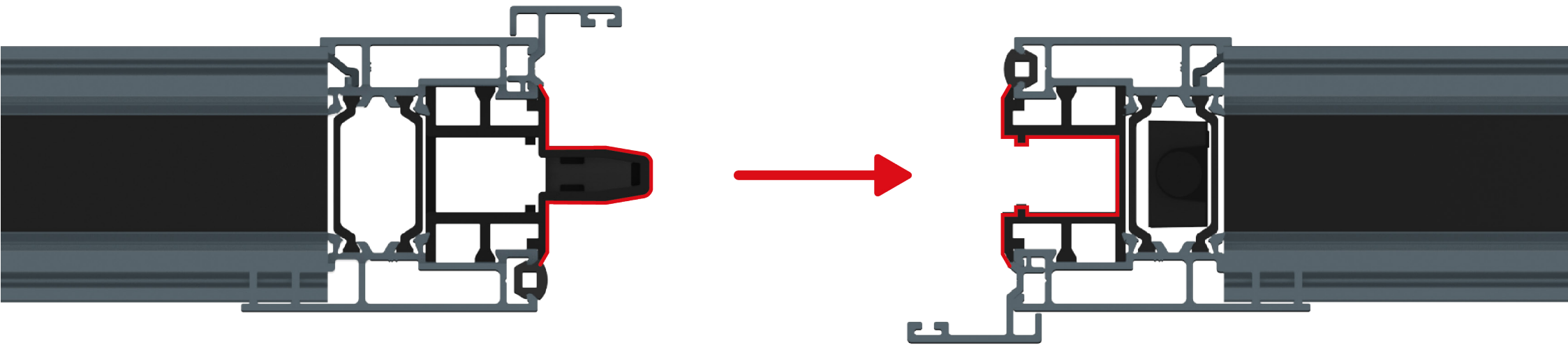
All of the sliding panels on a New Wave Door fully interlock when closed and are completely captive in both the top and bottom track, in this position the panels form a 'wall of security' so they cannot be levered apart or levered out of the track.

Pictured: New Wave Door Sliding Sashes Interlock

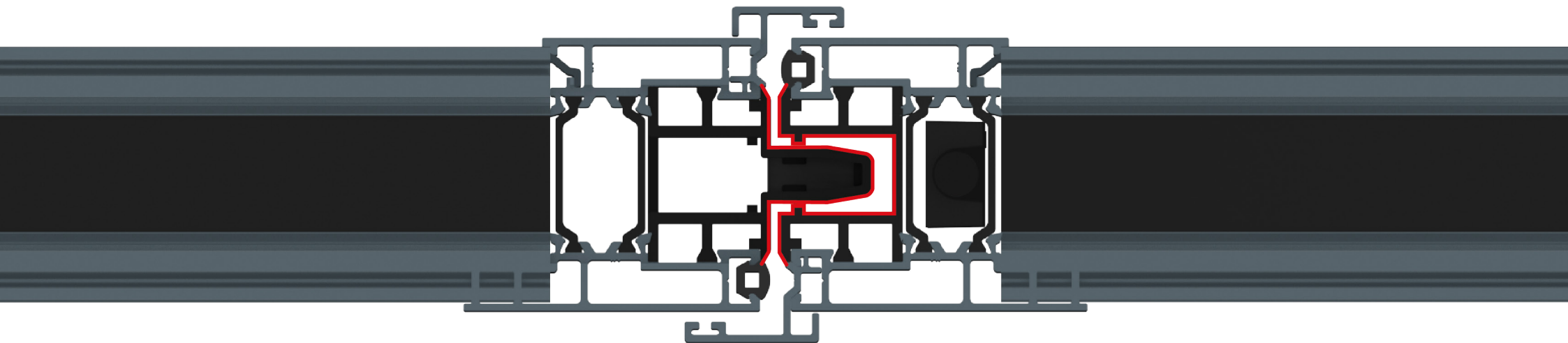
New Wave Doors - Doors That Do What Bi-folds Don't!

BUYER'S GUIDE

WHY A NEW WAVE DOOR?



IMPORTANT: For Clarity Internal & External Gaskets Have Been Removed From These Images



Pictured: New Wave Door Sliding Sashes Interlock Viewed From Above

BUYER'S GUIDE

WHY A NEW WAVE DOOR?

SECURITY

"SECURITY THAT'S NEVER BEEN COMPROMISED"

The clever patented New Wave Operating System is completely concealed and there are no visible hinges to attack.

The sliding panels can only open when they reach the master-door-end of the track and this can only happen if the master door is open, so unlike a bi-folding door, the New Wave's master door would need to be breached before any other panel can be opened. To breach our master door an intruder would need to defeat our awesome New Wave Decimal 10-Point Lock.

When you consider all of this it is hardly surprising that, since its release in 2012, we are not aware of the security of a New Wave Door ever being compromised.

We are confident that no other door system can claim this.



BUYER'S GUIDE

WHY A NEW WAVE DOOR?



10 point locking

"SUPER SECURE, SILKY SMOOTH & BEAUTIFULLY ROBUST"

The New Wave Door has proven itself beyond doubt to be the most secure door system on the market today, its security has never been compromised to our knowledge. We are very proud of this enviable accolade but we have not rested on our laurels. We were still unhappy with the door locks the industry manufacturers had to offer, so; we designed our own.

Our design team worked with one of the world's leading lock manufacturers, who are renowned for their pioneering lock technology and innovation, to build a completely bespoke lock that further enhances the security of the New Wave Door. The New Wave Decimal 10-Point Lock is an extremely secure high compression door lock with a silky smooth operation and a beautifully robust look.

Pictured: New Wave Decimal Lock Viewed In Situ



BUYER'S GUIDE

WHY A NEW WAVE DOOR?

SECURITY

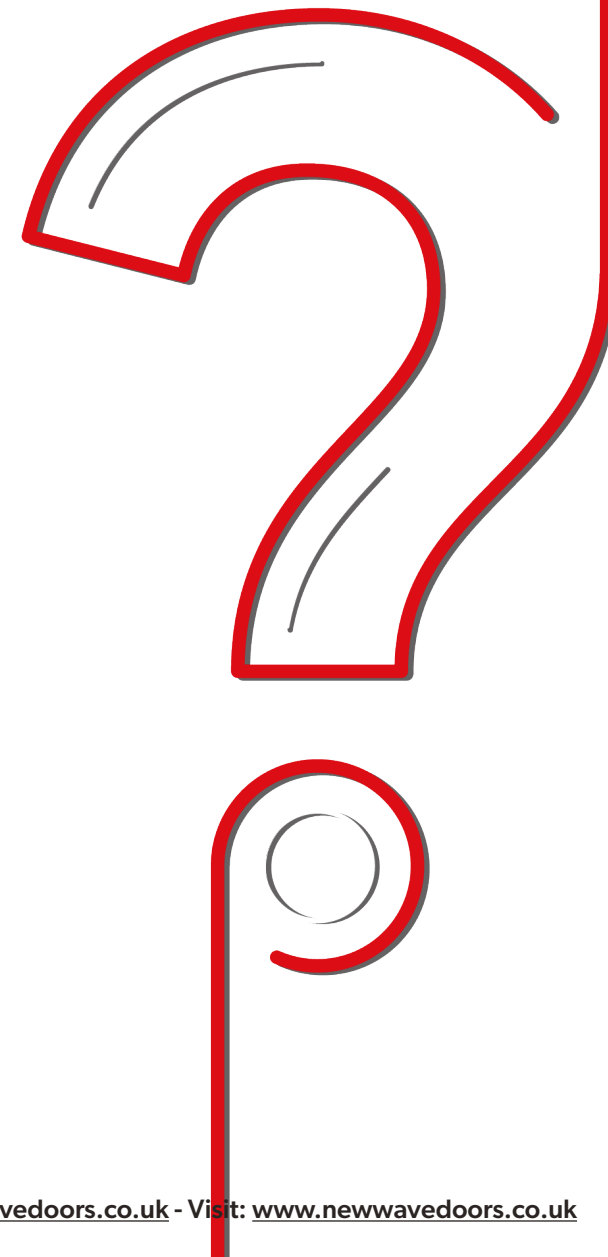
WHAT'S THE ISSUE WITH BI-FOLDS?

By complete contrast; a bi-folding door compromises security by its very design.

It's in the name 'Bi-fold'; the doors have to fold in order to operate, because of this the panels cannot interlock with each other and are simply connected with often visible and unsightly hinges which are an obvious target for intruders.

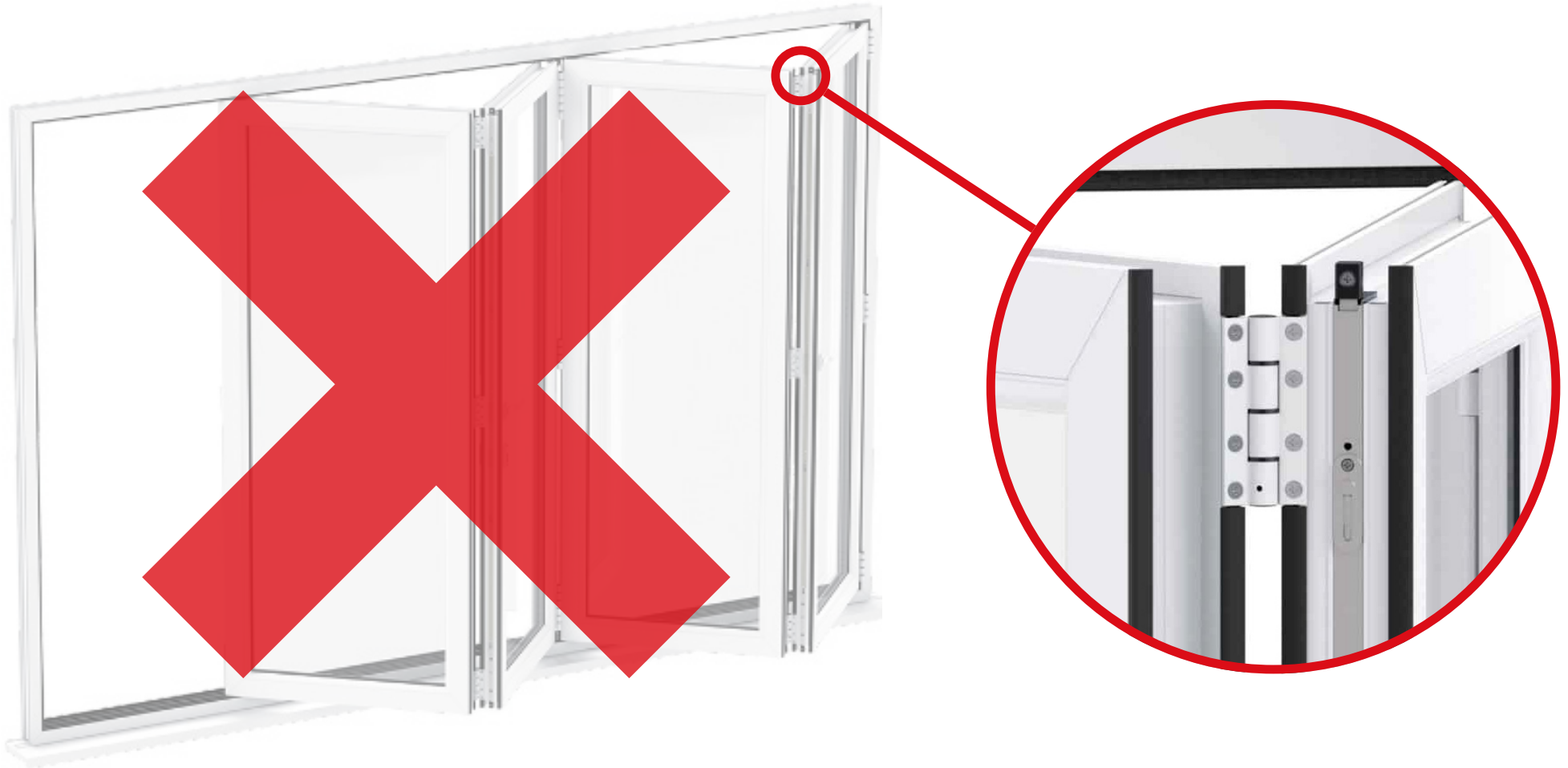
When locked, the folding panels have to be secured by small shoot bolts that engage in the top and bottom track and that's it - there is nothing in between! Breach one of these shoot bolts and the entire door can be opened.

This is literally a 2 point locking system! Would you be happy with that on your front door? - No, of course not, so why would you accept it on your back door especially when you take into account that 90% of all burglars gain access through a door.



BUYER'S GUIDE

WHY A NEW WAVE DOOR?



Pictured: A Bi-fold Door's Exposed Hinges & Lack Of Interlock

BUYER'S GUIDE

WHY A NEW WAVE DOOR?

VERSATILITY

"Simplicity Is The Ultimate Sophistication"

*"Simplicity is the **Ultimate Sophistication**" - Leonardo da Vinci*

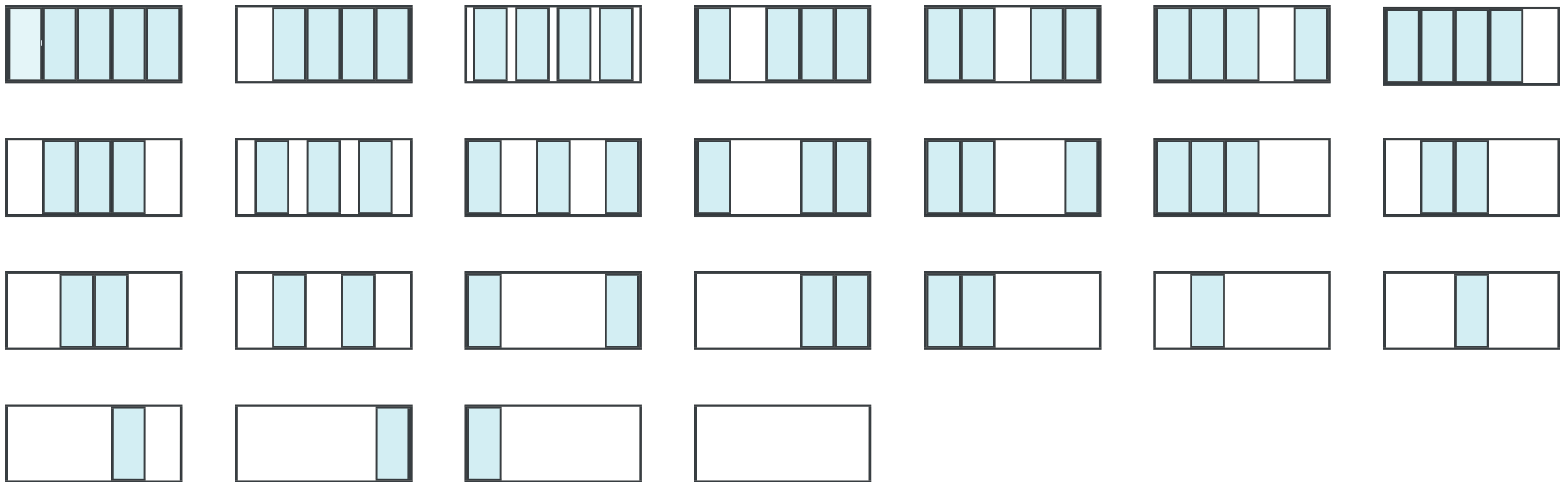
'S.U.S' as we like to call it, perfectly describes the patented New Wave Operating System and our commitment to simplicity of design. S.U.S is what makes the New Wave Door so versatile, it not only combines all the advantages of a patio door with those of a bi-folding door (with none of the many drawbacks) but adds a whole new range of opening options that no other door system can provide.

Pictured: 4 Panel & 7 Panel New Wave Door

BUYER'S GUIDE

WHY A NEW WAVE DOOR?

New Wave Door Opening Combinations - Because you can slide and open the panels individually, your New Wave Door can be used all year round and can quickly adapt to whatever the UK weather throws at you. When you compare the almost infinite amount of opening combinations of the New Wave Door with that of a bi-fold which generally has only 2 positions: open or closed, it does beg the question, who would actually want a bi-fold door in their home? As the Sunday Times said "The Bi-fold Door Is Dead".



Bi-fold Door Opening Combinations - A bi-fold door is generally either fully open or fully closed, that's it! It is simply an illusion that you will be using your bi-fold door every day, every week or even every month. This just doesn't happen because the UK weather won't allow it. When comparing price you should consider the amount of use you will get from your door, and on that basis the New Wave Door the best value option by far.



BUYER'S GUIDE

WHY A NEW WAVE DOOR?

PRACTICALITY

"OPEN WHAT YOU, WHEN YOU WANT, TO SUIT WHATEVER YOU NEED"

Practicality is a commonly overlooked characteristic when it comes to choosing the door system for your dream home or project.

The New Wave Door's major advantage here is that, due to the patented technology at the core of its design, furniture can be positioned right up to the door without interfering with the opening cycle.

Pictured: A 5 Panel New Wave Door

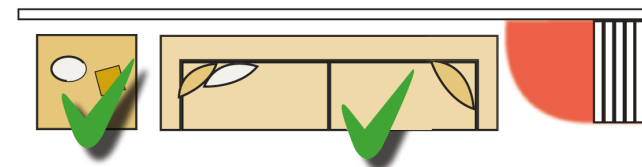
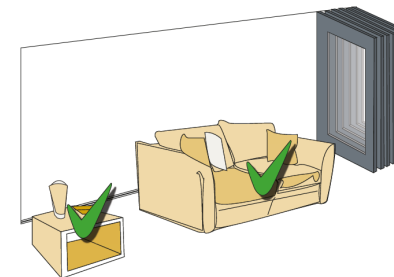
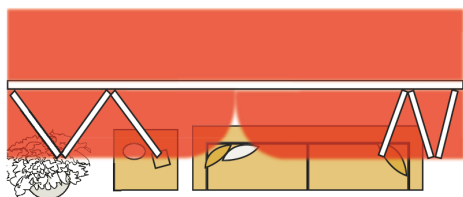
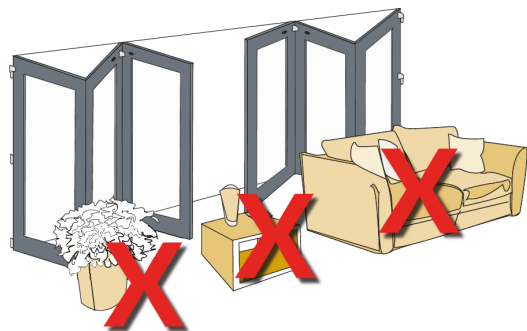
New Wave Doors - Doors That Do What Bi-folds Don't!

BUYER'S GUIDE

WHY A NEW WAVE DOOR?

The New Wave Door's patented technology allows its panels to operate completely independently of each other, meaning each of the panels can slide to the end and then swing open without encroaching into your living space, inside or outside.

This allows furniture to be placed right up to the door, both inside and out, thus the New Wave Door maximises your valuable living space. This is partially achievable with a patio door but with that you sacrifice the ability to open the door completely. The New Wave Door combines all of the advantages of the patio and bi-folding doors with none of the many drawbacks and setbacks.



Due to the outdated design and cumbersome opening operation of the bi-fold door the panels have to open out into your outside living space and then slide to one end (or both). To open the bi-fold panels you also need to be able access the unsightly handles on the inside of the door.

Because of this you are unable to place any furniture immediately outside, because the door needs that space to open and you can't have any furniture immediately inside because you need that space to open the door. This wastes much more space than you think, compare the two diagrams on this page to check it out for yourself!

BUYER'S GUIDE

WHY A NEW WAVE DOOR?

USABILITY

ERGONOMICALLY DESIGNED FOR EFFORTLESS OPERATION

Simplicity and ease of operation are at the heart of the New Wave Door's design. Being simple to use and easy to operate means the New Wave Door can be used at any time of year!

Every New Wave Door has a master/main traffic door which operates like a conventional residential door. Many of the bi-fold configurations don't have this luxury, which is very impractical if you intend to use your door more than a few times a year.

Pictured: A 5 Panel New Wave Door

BUYER'S GUIDE

WHY A NEW WAVE DOOR?

USABILITY

ERGONOMICALLY DESIGNED FOR EFFORTLESS OPERATION

Customers that have finally given up on their bi-folds in favour of a New Wave Door, frequently tell us how much more often they use their doors because of how easy the system is to use and how adaptable it is to every day scenarios. They went from only ever using their bi-fold door a couple of times in summer to using their door nearly everyday!

The amount of times you use a product and the amount of pleasure it gives you is what determines its true value. The New Wave Door is easily the best value door system available today. It costs about the same as a bi-fold but can be used far more often and, thanks to its ergonomic design, is actually enjoyable to operate.

Pictured: A 5 Panel New Wave Door

BUYER'S GUIDE

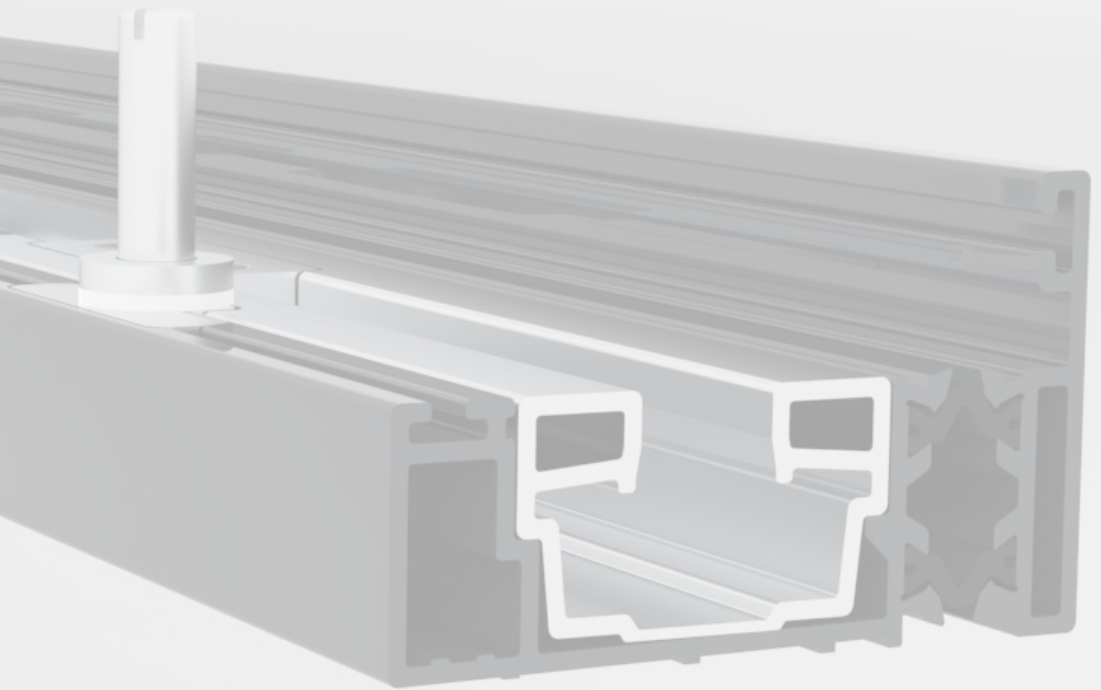
WHY A NEW WAVE DOOR?

RELIABILITY

NO COMPLEX GEARING TO GO WRONG, SIMPLY SOPHISTICATED

The New Wave Door has been ergonomically designed for optimal user experience. Its patented technology allows the panels to operate independently of each other and open like a conventional front or back door.

The technology removes the need for complex gearing and ensures the weight of the panels is always supported along the bottom track, just like a conventional patio door. This is one of the major issues with a bi-folding door.



Pictured: A Close Up Of A New Wave Door's Bottom Track

BUYER'S GUIDE

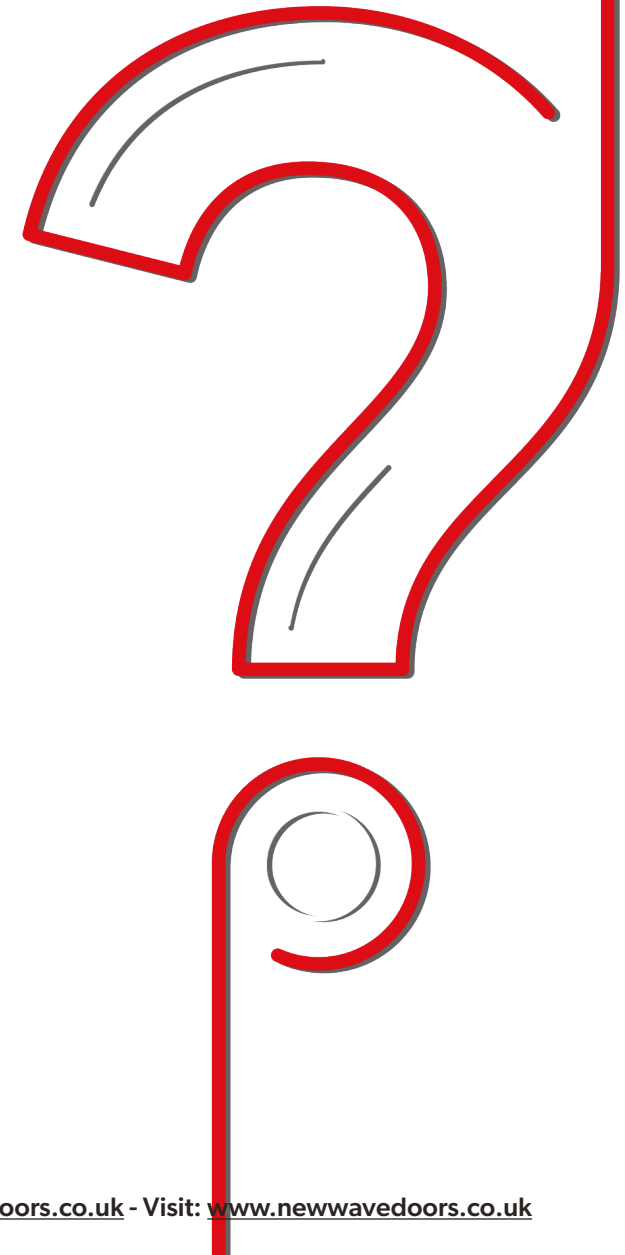
WHY A NEW WAVE DOOR?

RELIABILITY

WHAT'S THE ISSUE WITH BI-FOLDS?

The panels of a bi-folding door have to be held together by often unsightly hinges, when folding there is a huge weight displacement in the panels which exerts immense force on the top track, the hinges and the gearing.

It is a combination of these design flaws and the diverse and unpredictable UK weather that can cause the operation and weather seal of bi-folding doors to deteriorate so quickly. Their panels literally force themselves out of their original position and once this happens it is very difficult to correct and often never fixed because of this and the fact that it will simply happen again.



BUYER'S GUIDE

WHY A NEW WAVE DOOR?

GOOD LOOKS

CONTEMPORARY STYLING ACHIEVED BY INTUITIVE DESIGN

Thanks the New Wave Door's elegant design and clean contemporary styling you can be sure that, with all of its customisable features, your New Wave Door will perfectly compliment the chosen aesthetic of your project.

Whether it be a traditional barn conversion or a project from the next episode of 'Grand Design' the New Wave Door's uninterrupted look will fit right in.

Pictured: One Of 5 Sets Of New Wave Door Installed In A Luxury Car Garage

New Wave Doors - Doors That Do What Bi-folds Don't!

BUYER'S GUIDE

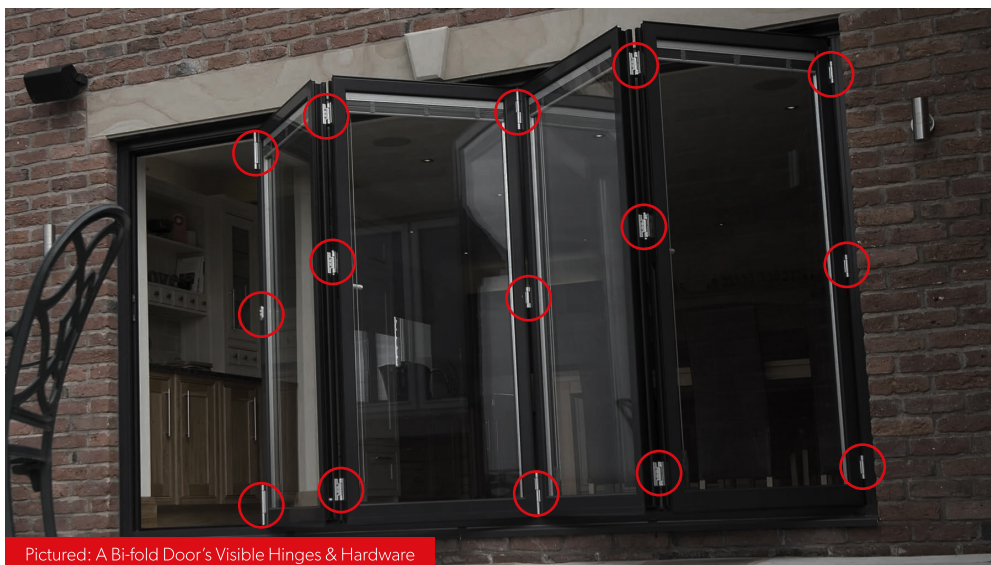
WHY A NEW WAVE DOOR?

The clever design of the New Wave Door obviates the need for unsightly handles, hinges and cumbersome operating mechanisms. This gives the New Wave Door clean unbroken sightlines and a sharp contemporary look, this combined with the intuitive design and operation conveys an exceptional feel of quality unmatched by any other door system.

You can rely on the New Wave Door to bring the 'WOW' factor to any project - when fully closed it is simply stunning and when open it gets even better as all the panels stack neatly together at one side and are held together by concealed technology.



Pictured: A 4 Panel New Wave Door Installed In A Property In Bristol For An Episode Of 'Sarah Beene's Renovate, Don't Relocate'



Pictured: A Bi-fold Door's Visible Hinges & Hardware

On the contrary; take a look at the amount of unsightly hinges and hardware that is visible when a bi-fold door is open. The hinges and operating system are exposed and this gives a cluttered and clumsy look. Due to the outdated technology many bi-fold doors may also have D-handles and face-fit magnets visible on the both the inside and out.

This, when compared to the clean unspoiled look of the New Wave Door, becomes a 'no brainer' when looking to achieve that highly sought after clean cut contemporary aesthetic.

BUYER'S GUIDE

CUSTOMISING YOUR NEW WAVE DOOR

CUSTOMISING YOUR NEW WAVE DOOR

Unlike a bi-fold, a New Wave Door is a completely bespoke product - this means you can customise almost every aspect of the door to truly make it your own, and with our online Door Configurator that has never been easier!

Our Configurator, which can be found on any of our marketing pieces or website pages, walks you through the array of options available when customising your New Wave Door.

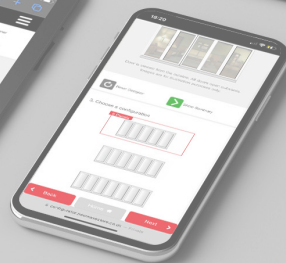
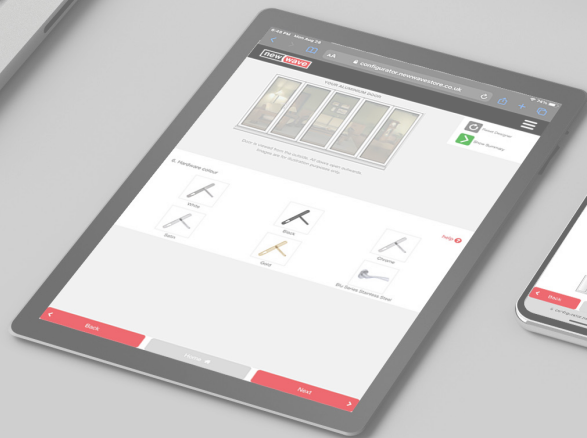
Scan the QR code below to get started!



Scan To Start Designing Your
Very Own New Wave Door

or click [here](#)





BUYER'S GUIDE

CUSTOMISING YOUR NEW WAVE DOOR

CONFIGURATION

All New Wave Doors are made-to-measure so just enter/ provide some approximate dimensions to get started, you can then choose which side you would like the main traffic door and the panel make-up of your door.

New Wave Door panels can be anywhere from 650mm to 1000mm wide so (depending on your measurements) it is likely that you will have various options to choose from.

BUYER'S GUIDE

CUSTOMISING YOUR NEW WAVE DOOR

COLOUR

When choosing the colour for your New Wave Door, you can choose from our standard colours (RAL7016M - Anthracite Grey, RAL9003M - Signal White & RAL9005M - Jet Black) or, if you'd prefer a more bespoke creative look, you can take your pick from over 200 RAL colours.

If that wasn't enough you can also choose from a range of textured finishes, which offer a brushed-sand effect bringing and unbeatable combination of style and durability.

BUYER'S GUIDE

CUSTOMISING YOUR NEW WAVE DOOR

HANDLE

Choose from 5 colours & finishes within our standard range of handles to create an aesthetic that perfectly suits your chosen interior and exterior design.

We also have the The BLU Series Stainless Steel Handle - this handle brings an exceptional feel of quality with a stylish aesthetic and unrivalled durability.

Pictured: Our BLU Series 505 Stainless Steel Handle



CYLINDER

Our doors come, as standard, with a high security cylinder. We also give our customers the option to upgrade to the legendary Ultion Anti-bump cylinder.

A New Wave Door's unrivalled level of security and bespoke New Wave Decimal 10-Point Lock combined with the Ultion's passion for home security creates the ultimate 'peace of mind' for homeowners.



Pictured: A Close Up Of An Ultion 3 Star Plus Cylinder

BUYER'S GUIDE

CUSTOMISING YOUR NEW WAVE DOOR

GLASS

With our 'Oxygene Range' (conventional glass options) and 'Oxygene Shade Range' (integral blind options) you can rest assured that we have a wide scope of choice for you to achieve various aesthetics and specification levels.

BUYER'S GUIDE

CUSTOMISING YOUR NEW WAVE DOOR

CILL & VENTILATION

Although this is usually determined by an architect's specification we still like to give customers complete flexibility to ensure they get the door they want, how they want it.

Thanks to our head add on-integrated trickle vents and our range of cill sizes your New Wave Door can be customised to achieve your specification and practical requirements.

Pictured: A New Wave Door With A 150mm Cill

BUYER'S GUIDE

THE STORY BEHIND OUR PASSION

THE STORY BEHIND OUR PASSION

THE PRODUCT

At New Wave we are about 'innovation for better'. We are known for challenging the 'Status Quo' and simply asking why? We accept nothing and challenge everything. Exceptional quality, innovation and value are at the core of everything we do. We constantly strive to be better and create an exceptional experience for our customers and partners.

The bi-folding door has always been a flawed product and since the introduction of the bi-fold into the UK market there has been no innovation in this unreliable, insecure and often unusable door system. Sure, some of the huge manufacturers have claimed innovation but in truth these are simply novelties and there has been no change or development to the operating principal, which is the cause of all of the problems and limitations.

In as early as 2008 we were looking at ways to improve the bi-folding door to make it reliable, secure and usable and

we quickly came to the conclusion that there was no way of doing this.



We were clearly correct in this conclusion as even 15 years later the bi-folding door is exactly the same as it was then, nothing has changed.

BUYER'S GUIDE

THE STORY BEHIND OUR PASSION

THE STORY BEHIND OUR PASSION

THE PRODUCT

We decided that there had to be a better way and we began work on a whole new idea.

- The patio door was the simplest and most reliable option but it had opening limitations and security issues.
- The bi-folding door had the advantage of being able to fully open but had serious reliability, security and usability issues as well as very questionable weather resistance.

What we needed was a door system that had the simplicity and reliability of the patio door and was able to fully open like a bi folding door. Then we needed to make the system usable, secure and weather proof. The result was the New Wave Door.

Our patented New Wave Operating System allows each panel to slide and swing open. Any part of the door can be

opened, as much or as little as you want, and the exceptional reliability and security has now been proven in over 10 years since its UK release.



DOORS THAT DO WHAT BI-FOLDS DON'T!

The term 'Slide & Swing Door' was invented by us as a descriptive title for our revolutionary product.



Pictured: 4 Panel & 7 Panel New Wave Door

BUYER'S GUIDE

THE STORY BEHIND OUR PASSION

THE STORY BEHIND OUR PASSION

THE BACKLASH

Our revolutionary technology was never welcomed by the massive bi-folding door manufacturers with their huge market dominance, and they did everything they could to prevent us bringing our technology to the market.

In the early years, we took the New Wave Door to the major home improvement shows such as Grand Designs Live, The Ideal Home Show and The Home Building & Renovating Show. It was a huge success; customers loved it and our stand was easily the busiest at any of the shows. This incurred the wrath of some exhibitors selling the already out dated bi-folding door.

We had our exhibition stand and vehicles vandalised, items stolen from our stand and even our staff threatened. They sent bogus customers to our stand to cause arguments, told lies about us and even reported us to the organisers for having so many customers on our stand that they were blocking the

aisles in order to watch our demonstrations.

Despite this, the fact was, that customers unsurprisingly preferred the New Wave Door and we consistently outsold them and in one show alone sold over £2 million of doors. A group of bi-folding door sellers then tried to get us excluded from the shows and some just gave up attending all together.



BUYER'S GUIDE

THE STORY BEHIND OUR PASSION

THE STORY BEHIND OUR PASSION

NEVER MIND THE BI-FOLDS

In 1978 Virgin Records released the famous 'Never Mind The Bollocks Here's The Sex Pistols' album.

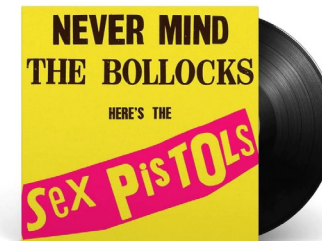
Richard Branson caused something of a stir by displaying this album cover in his record stores and he was even arrested for actively displaying the word 'Bollocks' in his record shops. He stood by his guns however and he was eventually acquitted in a subsequent court case. It turns out that 'Bollocks' is actually an 18th century word for priests, and he had a professor of English Language, who was also a priest, back him up on this in front of judge and jury.

We always admired this and we decided to take a leaf out of his book; so we mocked up our own version of this iconic album: "Never Mind The Bi-folds, These Doors Are The Bollocks".

We then plastered this graphic all over our exhibition stands and started giving away free T-shirts bearing the new slogan.

The first day we did this customers just loved it as it reminded many of the original, much loved, album from the Sex Pistols. We had a huge queue for T-shirts, as well as New Wave Doors, and consequently our stand was literally overrun - customers were even queuing in the isles to take pictures in front of our stand with their new T-shirts.

THE ORIGINAL SEX PISTOLS ALBUM...



...OUR COMICAL RE-MAKE OF THE ALBUM

BUYER'S GUIDE

THE STORY BEHIND OUR PASSION

THE STORY BEHIND OUR PASSION

NEVER MIND THE BI-FOLDS

Everybody was having fun and we gave free drinks and food to everyone who came on the stand. Before the show opened on the second day, we were visited by show security demanding that we remove the 'Never Mind The Bi-folds' marketing from our stand and stop wearing and giving out the T-shirts.

A MOCK UP OF THE T-SHIRTS



However, we were able to quote the Richard Branson court case, the story of which is available on the internet, and it was quickly decided that our marketing must be allowed to stay. A 'friend' in the organisers told us that 5 exhibitors had complained, all of whom were bi-fold door sellers. We sent T-shirts for their staff over to their stands and there were some very red faces. The point is, that we never gave up and refused to be bullied - we learned a lot from customers at the shows and gained an even deeper understanding of what customers actually wanted from a door system, and it is this feedback that has driven all of our development. We actually asked customers what they would like from a door system as opposed to telling them what they needed. It is this customer-driven development that has made the New Wave Door what it is today and why we say it is a customer focused product, because we listened and then made it happen.

We continued to take the New Wave Door to exhibitions and shows right up until 2020 when COVID-19 prevented such events for a while.

BUYER'S GUIDE

THE STORY BEHIND OUR PASSION

THE STORY BEHIND OUR PASSION

EVOLUTION

After COVID-19 prevented us from attending any exhibitions, we had to find another way of showing customers the New Wave Door, so we brought forward the launch of our industry leading New Wave Door Configurator, which allows customers to design and price their door and view some cutting edge CGI videos demonstrating the advantages of our door system.



Now the New Wave Door has made its mark and the latest version, the Leggera (released in late 2022), has some exiting new features as we continue develop this incredible door system. A typical example of this development is the New Wave Decimal 10-Point Lock.

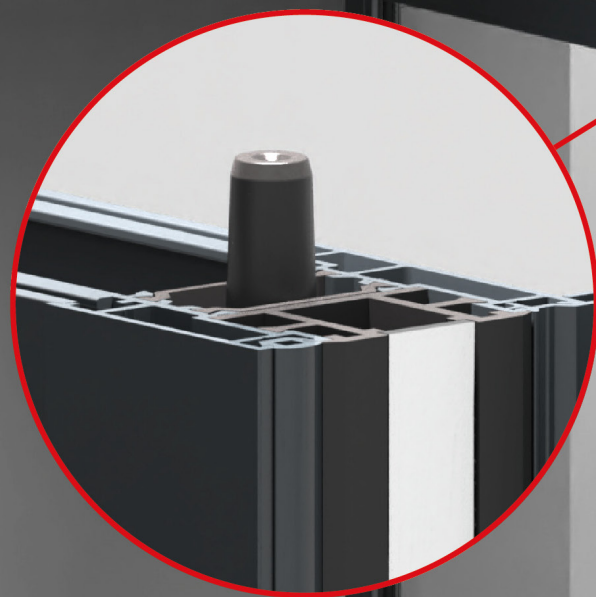
Unlike other manufacturers we were not prepared to make any compromises in door design to accommodate cheap (or sometimes expensive) off-the-shelf door locks that simply did not offer the all round performance and security that we wanted.

We teamed up with a major lock manufacturer who are widely accepted as the leaders in door lock technology and development, to produce a completely bespoke lock for the New Wave Door that would enhance its already outstanding security, and overall, performance. The result was the New Wave Decimal 10-Point Lock, a high compression door lock with a silky smooth operation that is, undoubtedly, the most secure of its kind and fulfils the specific requirements that we deemed necessary for the New Wave Leggera.



decimal

10 point locking



- 1
- 2
- 3
- 4
- 5
- 6
- 7
- 8
- 9
- 10



Pictured: New Wave Decimal Lock

BUYER'S GUIDE

THE STORY BEHIND OUR PASSION

THE STORY BEHIND OUR PASSION

EVOLUTION

"There is hardly anything in the world that cannot be made a little worse and sold a little cheaper, and those who consider price alone are that man's lawful prey"

The words of John Ruskin are indeed wise on this subject, when we design or commission any part, component or enhancement for the New Wave Door, we are not driven by price we are driven by performance and quality.

We are proud of our products and what we do, our strive for the best components, materials and processes is relentless. The New Wave Door aluminium extrusion is produced for us under licence by Cortizo, who are accepted as the world leaders in quality thermally broken aluminium sections.

"Quality and performance that is up to a standard, not down to a price"

They are not the cheapest and we could buy cheaper but Cortizo extrusion and paint quality is legendary. Our rejection rate on our New Wave extrusion from Cortizo is the lowest we have every seen, and we are fussy: too fussy in fact, at least according to other extrusion producers and powder coating finishers that we have seen and even dealt with in the past. There are cheaper alternatives for sure, some door systems use a cheap uPVC core with aluminium cladding for example but not at New Wave.

This same principal applies to the injection moulded components of our New Wave Operating System. We use a specially blended material that is 10 times the price of the cheap nylon material used by many suppliers. The tools we commission to make these parts are of the highest quality available and we use Protolabs, a world renowned high tech producer, to make them. Once again, we accept nothing and challenge everything until we get what we want.

In fact, you can be sure that we apply this principal to everything; it is just what we do.

“Quality is never an accident; it is always the result of high intention, sincere effort, intelligent direction and skilful execution”

- Will Foster

Pictured: A Close Up Of Our Door Release Trigger



BUYER'S GUIDE

THE STORY BEHIND OUR PASSION

THE STORY BEHIND OUR PASSION

EVOLUTION

Since we launched the New Wave Door and the 'Slide & Swing System' others have tried to develop a door that works like ours, but they don't have our technology, our 15 years of experience in development or our ethos of: accept nothing, challenge everything.

Their attempts have mostly faded to nothing and we watch vigilantly for any plagiarism of our design and technology.

To us, The New Wave Door system is more than just a door system, it's an experience. We continue to develop every aspect of this experience including simplifying the manufacturing and installation processes to minimise the possibility of errors and to keep quality at a standard that we feel no else can match.

Today, we continue to push back the boundaries and challenge what others accept. We have developed our own software and operating system to control ordering, manufacturing, installation and delivery. The New Wave Intel. system has been born from the inadequacies, poor performance and the ridiculous expense of industry software that just doesn't deliver what it promises. Once again, we challenged the 'Status Quo' and our New Wave Intel. system outperforms all the other off-the-shelf software systems.

New Wave Intel. development continues and soon an interactive customer portal will give customers unprecedented access to their order progress and a host of other features.

This is all part of the 'New Wave Experience' we are creating and despite our achievements we continue to strive for better and we hope this short article has helped you to understand what we are about and if you share our values and ethos, please take a closer look at what we do.

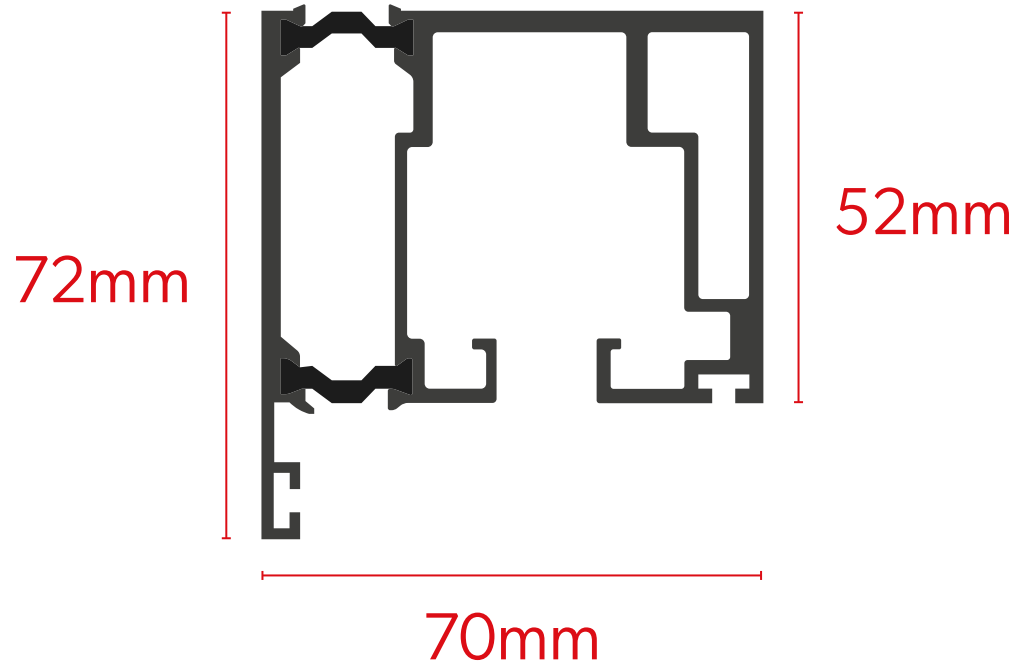


PRODUCT SPECIFICATION

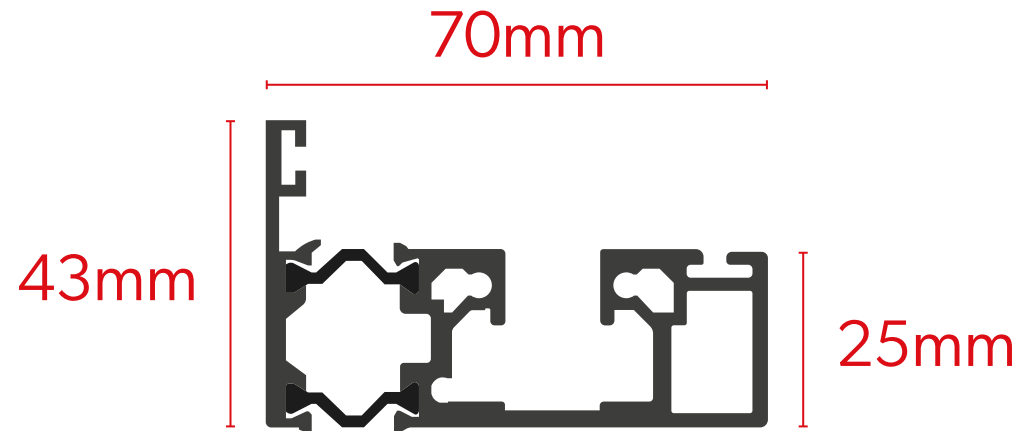
- Frame Depth: 70mm
- Suitable for commercial/heavy use applications
- Unlimited Number Of Panels
- Maximum Panel Width: 1000mm
- Minimum Panel Width: 650mm
- Maximum Panel Height: 2400mm
- Minimum Panel Height: 1800mm
- 10 year guarantee on New Wave Operating System
- Up to 20 year guarantee on paint finish
- PAS 24 door cylinder & ultra high security lock (New Wave Decimal Lock) come as standard
- BS EN 755-9:2016 extrusion quality
- No visible hinges or hardware on the sliding sashes brings clean unbroken sight lines like no other door system
- Designed, tested and fabricated in Great Britain

BUYER'S GUIDE
PRODUCT SPECIFICATION

IMPORTANT: Images Are For Illustration & Dimension Purposes Only



New Wave Door Top Track



New Wave Door Bottom Track



© New Wave Doors Ltd 2023

THE DOORS THAT DO WHAT BI-FOLDS DON'T

Need Something Else? Have Any Questions? Want To get A Price?

Just scan the relevant QR code below!

Scan To:
Visit Our Website



or click the link below
www.newwavedoors.co.uk

Scan To:
E-mail Us



or click the link below
sales@newwavedoors.co.uk

Scan To:
Design Your Door



or click the link below
www.newwavedoors.co.uk

Scan To:
Call Us



or call
01179 724 551

Scan To:
Request A Quote



or click the link below
www.newwavedoors.co.uk